

NIGHTCAP™

OPERATOR'S MANUAL



## CONTENTS

### OPERATOR INSTRUCTIONS

- 01 INSTALLING NIGHT VISION MOUNT (3- OR 4-HOLE)
- 03 BATTERY PACK INSTALLATION
- 04 EXAMPLE OF COMPLETED INSTALLATION READY FOR DONNING
- 05 DONNING AND ADJUSTING NIGHTCAP™

## INSTALLING NIGHT VISION MOUNT (3- OR 4-HOLE)



1. Peel back inside pad, uncovering interior center panel.



2. Hole locations for both 3- and 4-hole mounts are pre-punched in the internal support material and can be located using a flashlight. Alternatively, you may skip to Step 4 and use a knife to manually locate the holes.



3. Move flashlight around to locate and mark each hole. 4-hole mount locations are circled in red.

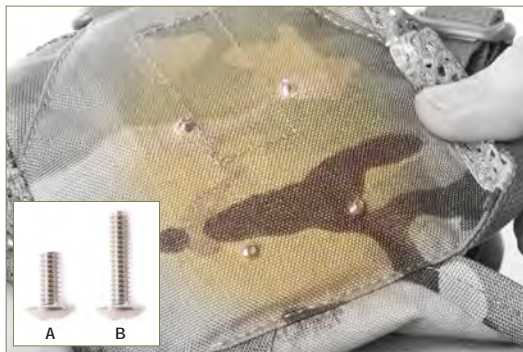


4. Use a knife to create a small hole at each mark.

Refer to opposite page for hole locations for a 3-hole mount.



5. Turn NightCap™ over and finish making the holes on the outside of the mounting area.



6. Push provided screws through holes from the inside so that the threads point outwards. Use screw A (pictured) for either 3- or 4- hole mount if no shim is used. Use screw B for top two holes of 4-hole mount with shim.



7. Screw mount in place.

### 3-HOLE MOUNT PLACEMENT



If using a 3-hole night vision mount, refer to the hole locations circled in red.

## BATTERY PACK INSTALLATION



1. Mount battery pack to rear Velcro® panel.



2. Route power cable through channel and connect to mount.



3. Excess cable can be folded and tucked back into channel.



## EXAMPLE OF COMPLETED INSTALLATION READY FOR DONNING



## DONNING AND ADJUSTING NIGHTCAP™



1. Install night vision device and loosen all adjustment buckles. Holding rear adjustment straps, lean head forward, pocket forehead against pad and place over head.



2. Hold in place at rear of NightCap™ and tighten rear adjustment strap until snug.



3. Place and center chin cup on chin and secure buckle.



4. Pull front adjustment strap hardware down until snug.





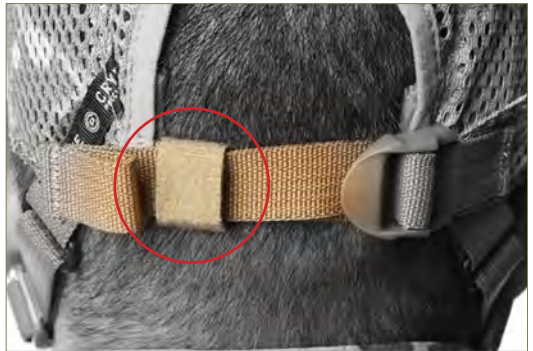
5. Pull rear adjustment strap hardware down until snug.



6. If bottom edge of NightCap™ headband is touching your ears, adjust side-to-side top adjustment tabs.



7. Front-to-back adjustment strap can be tensioned to balance the night vision device.



8. Use slack retainer to secure excess rear adjustment strap.

## ABOUT US

Crye Precision designs and manufactures truly innovative equipment for America's fighting forces. We are proud and honored to serve our customers' needs. We spend as much time as we can with users, continuously incorporating their experience and feedback into the gear. We give them our full support and are indebted to them for their service and their sacrifice. We make uncompromising gear for uncompromising individuals. We work hard to provide smart, high-performance, long-wearing gear for people who demand the best. We make all of our gear in America from American materials. Every item is designed to help you perform better.

## WARRANTY

If a defect in materials or workmanship is found in any of our products, we will repair or replace it, free of charge, for the lifetime of the product. This excludes normal wear and tear. Be aware that the customer is responsible

for any and all return shipping charges.

This applies to the original purchaser and is nontransferable.

## BODY ARMOR

It is against Federal Law for a person convicted of a violent felony to purchase or possess body armor. In addition, various states also have laws restricting the purchase or possession of body armor by persons convicted of certain felonies, other crimes of violence, or drug crimes. By purchasing body armor, you acknowledge and certify that (i) you have no felony convictions, (ii) you have not been convicted of any other crime that would restrict your ability to purchase or possess body armor under any Federal or State law, (iii) you do not intend to use the body armor for any criminal purpose and (iv) you are over 18 years old. Crye Precision reserves the right, in its sole discretion, to refuse to sell body armor to any person. Additionally, the sale of body armor to residents of Connecticut is restricted to

in-person sales, unless the sale is made to certain law enforcement or military personnel. We require that all orders of body armor be accompanied by a government issued photo identification.

## CONTACT INFO

Crye Precision LLC  
Brooklyn Navy Yard  
63 Flushing Ave Unit 252  
Brooklyn, NY 11205

Phone: 1.718.246.3838  
Fax: 1.718.246.3833  
E-mail: [sales@cryeprecision.com](mailto:sales@cryeprecision.com)  
Web: [www.cryeprecision.com](http://www.cryeprecision.com)

## COPYRIGHT

© 2013 Crye Precision LLC. NightCap™, Crye Precision™, and the 'CP' logo are trademarks of Crye Precision LLC.

**SERVING THOSE  
WHO PROTECT  
FREEDOM™**



CRYE PRECISION.